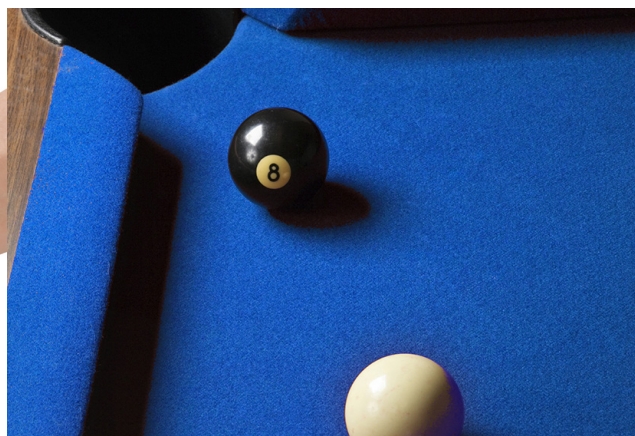
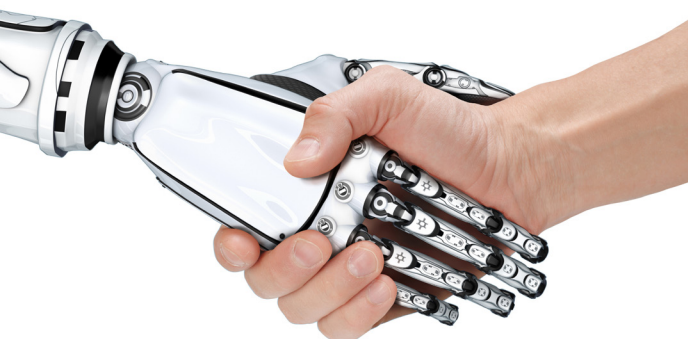


A710 HTH

High Throughput Hotel Load-and-Go Automation Suite™



Automation You Will Love

The all-new A710 High Throughput Hotel (HTH) has been completely redesigned from the ground up. It now has a revolutionary new kinematic auto-alignment system to ensure perfect plate placement every time. And with our proprietary new alignment system, there is no need for ultra-flat surfaces—making automation even more accessible to any lab. Completely reimagine automation-based experiments with drag-and-drop programming via our patented Visual Protocol Designer (VPD) and leverage templates to build multi-plate experiments. And to make things even better, the A710 HTH now comes standard with a two-year warranty.

Ease of Use You Expect

The A710 HTH works in perfect synchronization with your A600 HTAS and the CellCapTure™ software suite. The straightforward template-driven experiment design and automated fluidic modes provide users with a simple “load-and-go” workflow. Barcode your plates and the integrated advanced imaging system automatically matches your plate template ensuring data integrity.

Flexibility You Demand

Automated software controls provide users the ability to run lidded or unlidded experiments with the same variety of plate types compatible with the A600 HTAS. The A710 now has a higher-per-hotel plate capacity than its A700 predecessor; additionally, it has user-adjustable random access racks to easily accommodate deep-well format plates on the fly. Users can also effortlessly manage multiple experiments requiring different sets of reagents with our all-new A710 compatible reagent rack! And even if you're not an existing Stratedigm flow cytometry customer, our A710 is now available for OEM!

Features:

- Kinematic auto-alignment for perfect plate placement
- Simple one-touch setup
- Works on most lab surfaces
- Advanced imaging – automatic plate detection and barcode scanning (optional)
- Standard two-year factory warranty

Storage Options:

- Accommodates up to 8 random access or sequential racks
- High-Density random access rack (RAR) – up to 12 plate capacity per rack for standard depth plates and up to 6 plate capacity for deep-well plates per rack
- Sequential access rack (SAR) – 30 plates per rack

Plate Compatibility:

- Lidded or unlidded experiments
- 24-well: flat and round bottom
- 96-well: U-bottom, V-bottom, flat bottom, and deep-well
- 384-well: flat bottom
- Tubes: 12 or 36 Eppendorf tube adapter, 24 or 96 cluster tubes

Optional Accessories:

- Barcode scanner – automatically match plates to plate templates
- Multi-reagent rack (MRR) – up to six 12- or 24-well Stratedigm reagent racks

System Compatibility:

- Software: Stratedigm CellCapTure™ software
- Flow cytometer: any S1000 or SE520 series analyzer – requires the use of a Stratedigm A600 HTAS for integration
- Now available for OEM with Stratedigm's MotionCapTure software

Other Specifications:

- Power requirements: 110–230 V
- Operating environment: 60–86 °F (15–30 °C)
- Weight: 30 lbs
- Size: 22" D x 32" H

